

Advanced Server for SAA

Simple and Reliable Connectivity to Midrange Hosts over the Internet and LANs



Overview

The Advanced Server for SAA is a complete package for connecting PCs attached to the Internet or corporate LAN to IBM AS/400 or AS/36 hosts. Supporting the most common LAN protocols - such as TCP/IP, IPX/SPX, and NetBIOS - Advanced Server for SAA can be connected to one or more AS/400 or System/3x host systems via Ethernet, Token Ring or direct Twinax (AS/400 only) connection. By implementing the Advanced Server for SAA solution, organizations gain the cost-efficiency and convenience of the Internet, the versatility of the LAN, the ease-of-use of the PC, and the reliability and security of the IBM midrange host.

Advanced Server for SAA is a complete communications solution; all required server and client components are included, as well as feature-rich BOSNOVA 5250 terminal and printer emulation, file transfer, and other APPC applications.

Advantages

- 1 Compatible with TCP/IP, IPX/SPX and NetBIOS protocols
- 2 Allows communication over the Internet (server-to-PC communication)
- 3 Operates on Windows 9x/NT/2000/Me/XP platform
- 4 Eliminates need for APPC router
- 5 Provides traffic encryption between the server and the client workstations for secure access to the host
- 6 Supports up to 2000 concurrent users and up to 5000 APPC sessions
- 7 Enables server-to-host communication via Ethernet, Token Ring and Twinax
- 8 Supports Euro (€) currency symbol



Client/Server Architecture Increases Host Efficiency

By using advanced client/server technology, host resources are freed from mundane communications tasks and are available for the more important task of running your business. Advanced Server for SAA gives real meaning to the phrase "open system" because it is entirely independent of network operating systems, such as Windows NT Server, OS/2 LAN Server, UNIX (file server), or Novell NetWare. In fact, it can be run on a LAN without any network file server at all!



A configuration wizard for Twinax connections simplifies installation.

Complete Communications Solution

Advanced Server for SAA is a complete, stand-alone communications solution that can be added to the network before any decisions about network servers are made. In the future, additional Advanced Server for SAA servers can be added regardless of the network server in use. The Advanced Server for SAA includes two components: server and client workstation software.

The Advanced Server for SAA Server runs on a PC using Windows 9x or a Windows NT/2000/Me/XP workstation or server, and does not require any complex installation or setup procedures. The Advanced Server for SAA Workstation client runs on the user's PC and includes emulation software, file transfer and a virtual router eliminating the need to install a resource-draining APPC router.

Flexibility

Using any of the common LAN protocols (TCP/IP, IPX/SPX, and NetBIOS), Advanced Server for SAA allows Internet- or LAN-connected PCs to communicate easily with one or more IBM midrange hosts, eliminating the need to install SNA drivers on the workstation. This configuration allows the use of common (non-SNA) bridges and routers on the LAN.

Secure communication is enabled between the server and the client workstation.



Security

Extending the AS/400's standard security, an optional server login procedure may be implemented. In this configuration, all traffic between the server and the client workstation can be encrypted, enabling secure communication over the Internet.

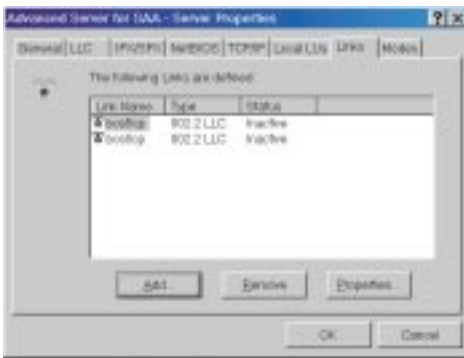
The Server

Advanced Server for SAA's 32-bit server software runs under Windows 9x/Me or a Windows NT/2000/XP workstation or server. By connecting to the AS/400 or AS/36 host system via a LAN or Twinax (AS/400 only) connection, and providing host access to PCs attached to the Internet or a LAN, an SNA communications path is created from the host to every PC on the Internet or LAN.

Note: LAN connection to AS/400 is not supported in Windows Me/XP because DLC protocol is not provided by Microsoft.

The Client

Advanced Server for SAA includes Workstation Client 32 for PCs running Windows 9x/NT/2000/Me/XP, and a Workstation Client 16 for PCs running Windows 3.x. The Workstation Client uses common LAN protocols to communicate with the Advanced Server for SAA Server.



Advanced Server for SAA enables PCs connected to the Internet or corporate LANs to access a midrange host.

32-bit Client Features

- 1 Rich terminal/prINTER emulation, including integrated MorphExpress™ On-the-Fly GUI
- 2 DTF (Data Transfer Function), providing bi-directional SQL-based data transfer capabilities between a PC and an AS/400 host. This includes a scheduler, which allows the user to run transfer automatically, according to time and other variable conditions.
- 3 Host Explorer administrative tool, enabling:
 - Access to all connected AS/400s, displaying libraries and files as if they were folders on another (PC) network drive
 - Drag-and-drop copying of folders or files
 - Send print jobs directly from your PC to AS/400 printer queues
- 4 E32APPC APIs to support the most common APPC client applications
- 5 User-definable macros with macro protection utility
- 6 External Link enables users to display the contents of a pre-defined file or directory web pages and DTF site
- 7 Background Bitmap allows specific display sessions to be customized with a user defined graphic file

16-bit Client Features

- 1 Rich terminal/prINTER emulation, including integrated MorphExpress™ On-the-Fly GUI
- 2 ATF (Advanced Transfer Function), providing SQL-based bi-directional data transfer capabilities between a PC and an AS/400 host
- 3 Remote Command, a Windows utility which permits a user to send host commands from a PC to a midrange host without requiring an emulation session
- 4 Concurrent operation of WinAPPC and EHNAPPC APIs to support the most common APPC client applications

Technical Specifications

Server Requirements

1	PC	Pentium 586, 100 MHz minimum
2	Memory	32 MB for Windows 9x/Me; 64 MB for Windows NT/2000/XP
3	Hard Disk	3 MB minimum
4	Operating Systems	Windows 9x, Windows NT 4.0 Server, Windows NT 4.0 Workstation, Windows 2000, Windows Me/XP (Twinax connection only)
5	Host Connections	Ethernet or Token Ring (802.2 LLC), Twinax (TDLC), using a PCI, ISA, or PCMCIA Twinax adapter card working in IBM-compatible or BOS Stealth modes.
6	LAN Connections	PC must be network-operable with either: IPX/SPX, NetBIOS, or TCP/IP protocols

32-bit Client Workstation Requirements

1	PC	Must be able to run Windows 9x, Windows NT 4.0, or Windows 2000/Me/XP
2	Memory	Windows 9x/Me: 8 MB minimum (16 MB recommended); Windows NT/2000/XP: 16 MB minimum (32 MB recommended); Windows 2000/XP: 32 MB minimum (64 MB recommended)
3	Hard Disk	System folder: 7MB, User folder: 10 -18, depending on applications installed
4	Operating Systems	Windows 9x, or Windows NT 4.0/2000/Me/XP
5	LAN Connections	PC must be network-operable with either IPX/SPX, NetBIOS, or TCP/IP protocols

16-bit Client Workstation Requirements

1	PC	386 DX minimum (486 DX recommended)
2	Memory	8 MB minimum (16 MB recommended)
3	Hard Disk	6 MB minimum
4	Operating Systems	Windows 3.x, Windows 9x or Windows NT/2000/Me/XP
5	LAN Connections	PC must be network-operable with either: IPX/SPX, NetBIOS, or TCP/IP protocols

Ordering Information

3810	Server
3813	Client with MorphMaster – An On-the-Fly GUI tool that analyzes and automatically generates Windows screens for AS/400 character based applications

U.S. Headquarters

Valley North Business Park
2501 West Behrend Drive, Suite 65
Phoenix, AZ 85027
Tel: 800 866-6267 623 445-2040
Fax: 623 445-2050
sales@bosusa.com
support@bosusa.com

European Headquarters

BOS House Meridian East
Meridian Business Park
Leicestershire LE19 1WZ
United Kingdom
Tel: +44 116 282 0600
Fax: +44 116 282 0601
sales@boseurope.com
support@boseurope.com

Corporate Headquarters

Teradion Industrial Park
D.N. Misgav, 20179
Israel
Tel: +972-4-990-7555
Fax: +972-4-999-0334
sales@boscom.com
support@boscom.com

www.bosweb.com

© 2002 BOScom, Ltd. All specifications are subject to change. All trademarks are the property of their respective owners.

MK0019.08.02

